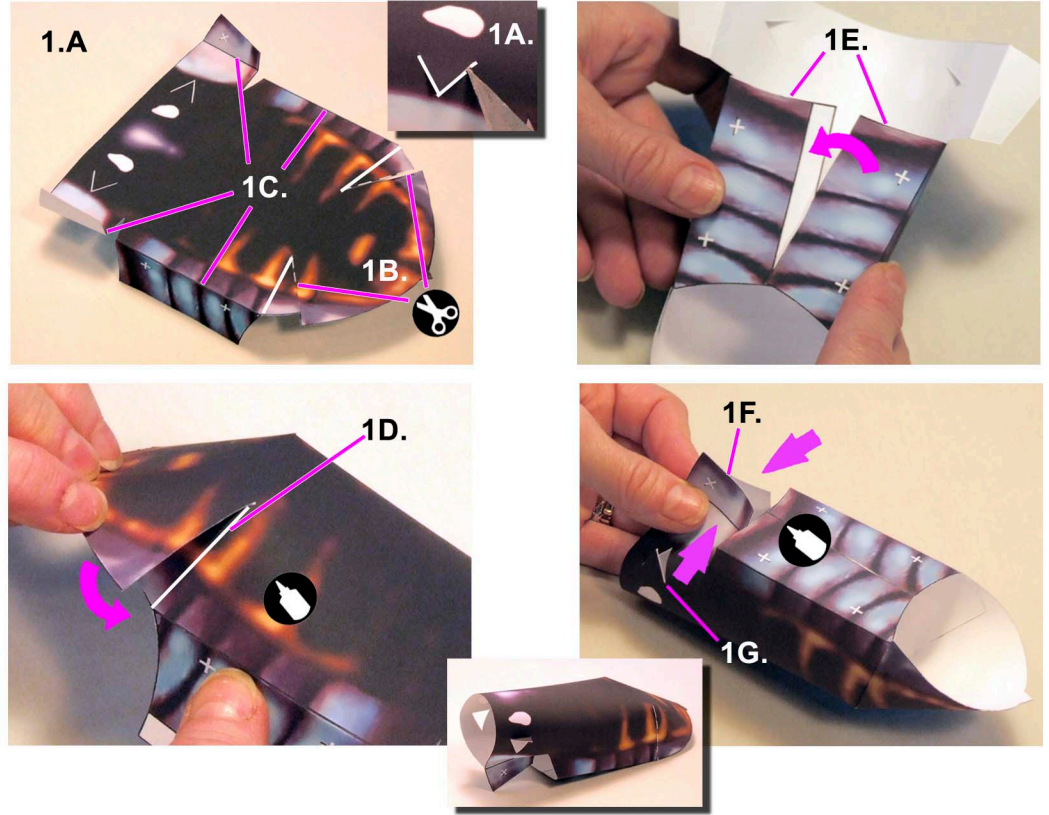


To make your Asian Longhorned Beetle model

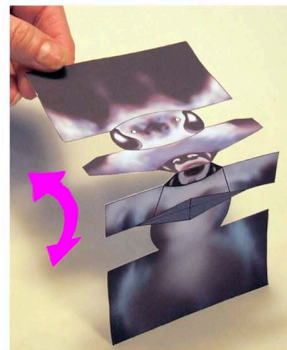
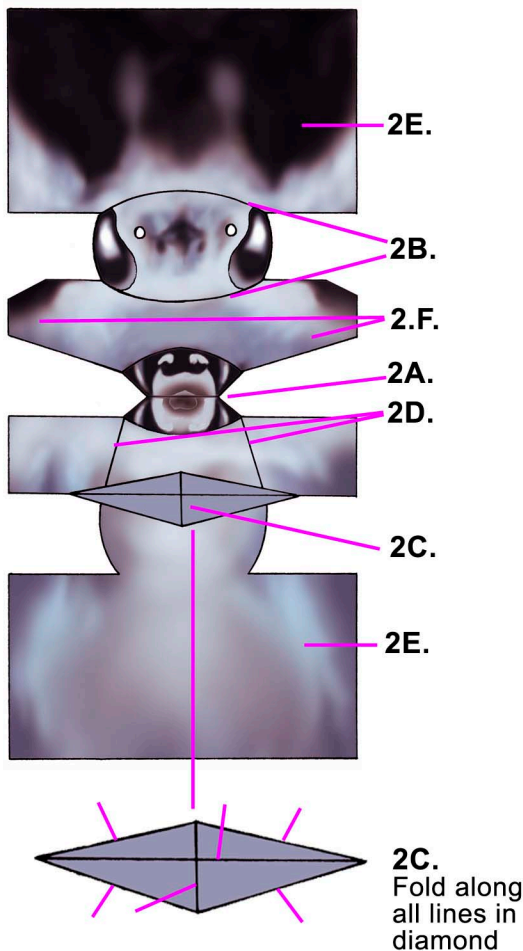
- You will need: scissors, glue (glue sticks work well)
- For better model colour reproduction and sturdiness we recommend printing your model on a Matte finish 36lb. inkjet paper or similar.

Body Construction

1. Carefully cut out all pieces.
- 1A. Cut triangular points on body on 2 sides. You may need to use a sharp utility knife or box cutter for this step.
- 1B. Cut along dotted lines on body piece.
- 1C. Fold down on solid lines on the long body tabs and upwards on short front body tabs.
- 1D. Bring cut edge (dotted line) to edge of folded body tab and glue in place.
- 1E. Bring body tabs together under body and glue together along overlap line.
- 1F. Glue front body tabs together as shown.
- 1G. Fold out triangular points.



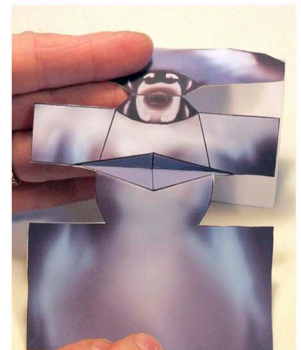
Head Construction



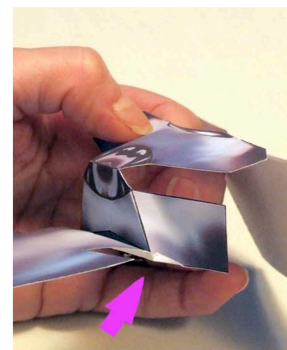
2A. Fold along 'mouth' line.



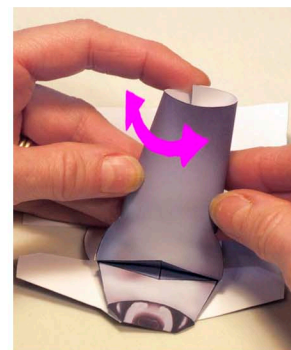
2B. Carefully fold along curved lines around eyes.



2C. To form bend in lower part of 'neck', carefully fold along edge and centre lines of diamond as shown.



2D. Fold down along lines on both sides of mouth to create tabs.



2E. Curl/roll both top and bottom of neck.

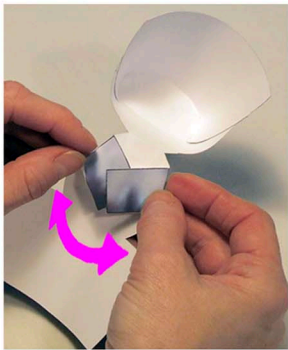


2F. Curl edge of top neck piece to line up with edge of eye, line up corner of 'face' tab with lower edge of neck and glue in place.

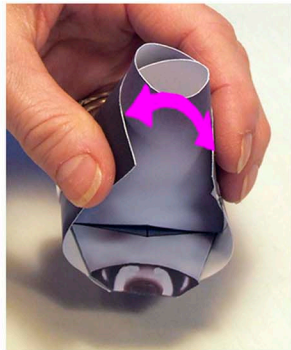
Head Construction to be continued on next page

Asian Longhorned Beetle Model Construction

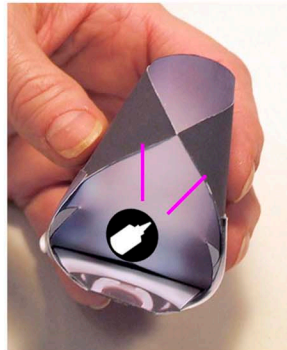
Head Construction Continued



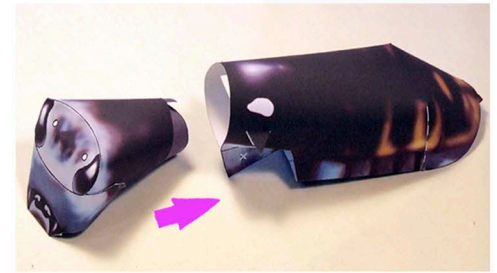
2G. Glue folded mouth tabs together as shown.



2H. Fold and tuck mouth/neck inside head. Your head should be starting to take shape.

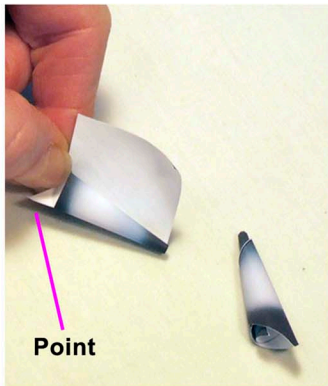


2I. Roll upper neck around lower neck and glue corners as shown to hold in place.



2J. Insert head into body opening as shown. This is a friction fit (no glue) so head can be turned. Check fit (snug not tight) remove the head to start work on antennae construction.

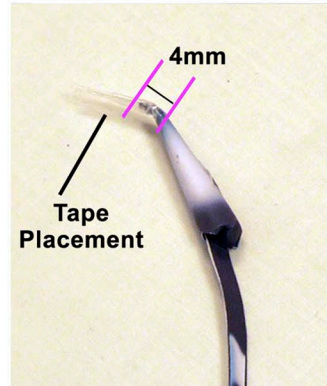
Antennae Construction



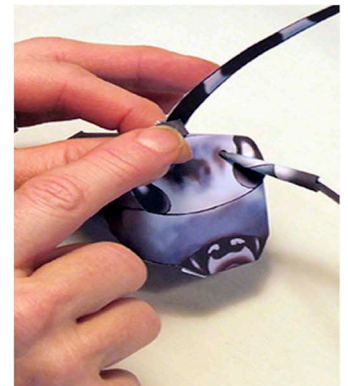
3A. Tightly roll trapezoid shaped pieces into cone shapes by lining up long pointed end with printed line. The tighter and pointier the cone shapes the better. Glue to hold.



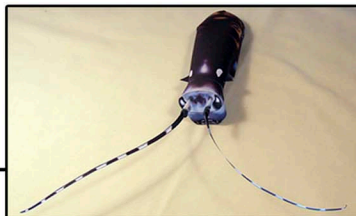
3B. Using a pin poke holes where indicated on head. Widen holes enough to fit tip of cone.



3C. Bend cone approx. 4mm from tip, wrap small piece of tape around and extending beyond bent tip and insert into hole on head. The extra length added by the tape helps to hold the antennae in place.

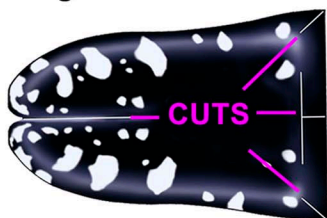


3D. Glue pairs of antennae pieces together to make them double sided, curl gently along length and insert into cones. Fold/tuck ends of cone in to hold antennae in place.

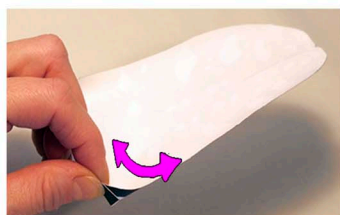


3E. Slide head piece into body.

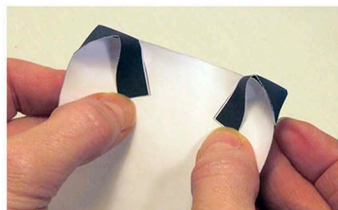
Wing Construction



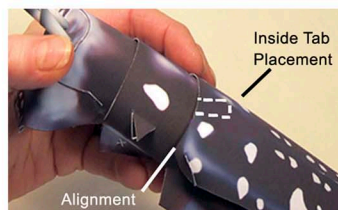
4A. Cut along white lines on wing piece to create tabs.



4B. Overlap corner cuts by lining up bottom edges, glue in place. Gently curl wings lengthwise.



4C. Fold down top tabs as shown.



4D. Position wings and glue in place as shown.

Leg Construction

5. Glue legs together in pairs (you will need to print second leg sheet for this optional step). Bend legs as shown and glue to body at 'x's.



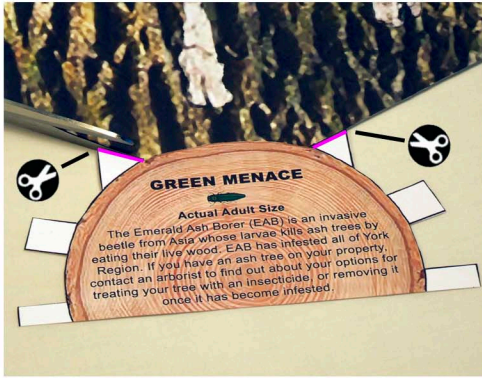
To Finish

6. Position beetle on stump as desired and glue feet to attach. Be careful not to block the trapdoor.

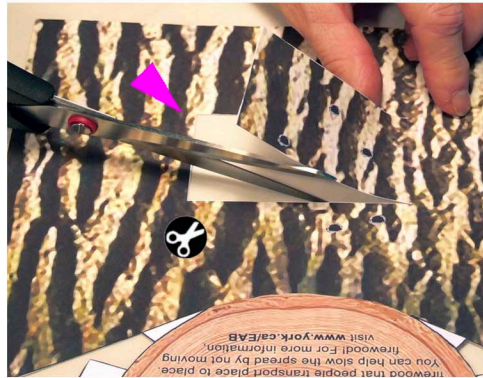


To make your tree stump model

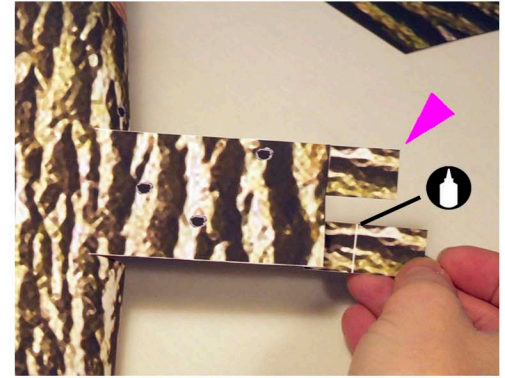
- You will need: scissors, glue (glue sticks work well)
- For better model colour reproduction and sturdiness we recommend printing your model on a Matte finish 36lb. inkjet paper or similar.



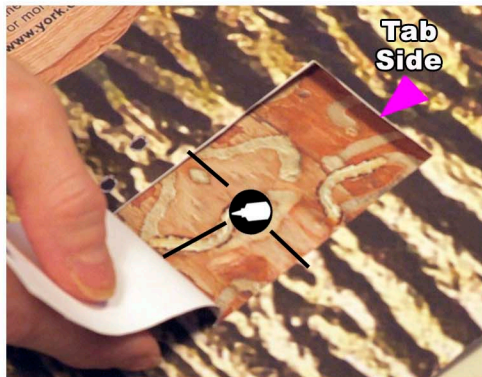
1. Carefully cut out all pieces. Be sure to cut inside tab as shown along pink line.



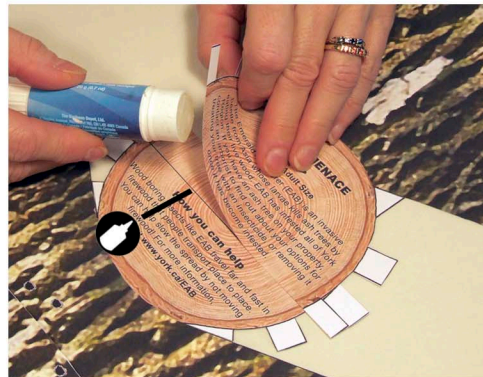
2. Cut out trapdoor on 3 sides only along white line on stump front as shown.



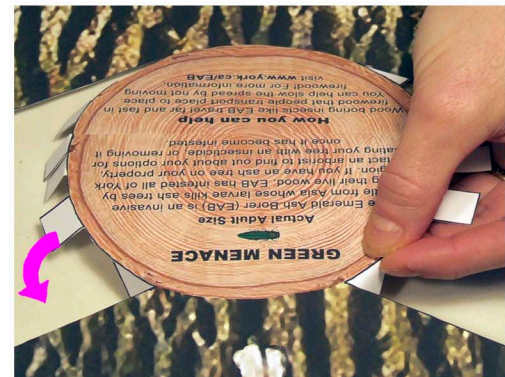
3. Glue tabs on trapdoor concealing white line.



4. Glue under larva piece in place on 3 sides (as shown) leaving tab side unglued.



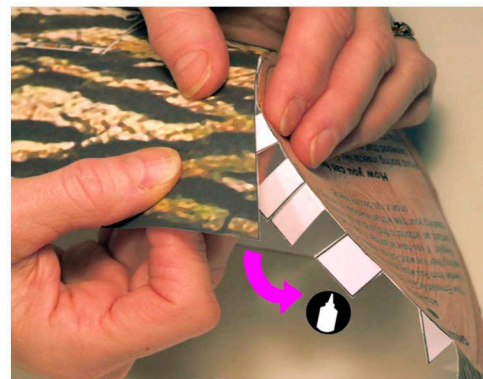
5. Glue stump pieces together at top along overlap line.



6. Fold tabs on stump top down.



7. Starting with trapdoor (front) side of stump fold top down around curved edge.

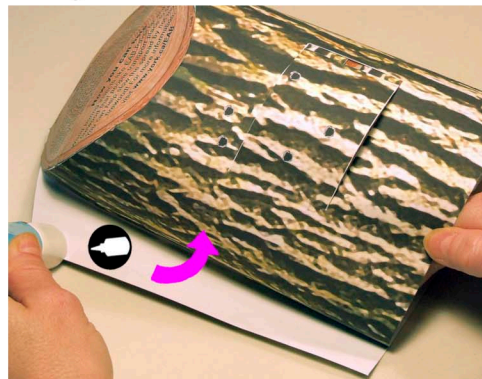


8. Curl sides around top and glue in place one tab at a time. *

* Hint: Making sharp folds at top and curling bottom corners of stump sides prior to gluing makes this step easier.



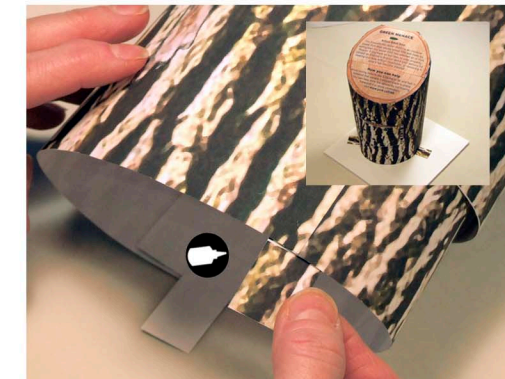
9. Repeat steps 7 & 8 with back side of stump.



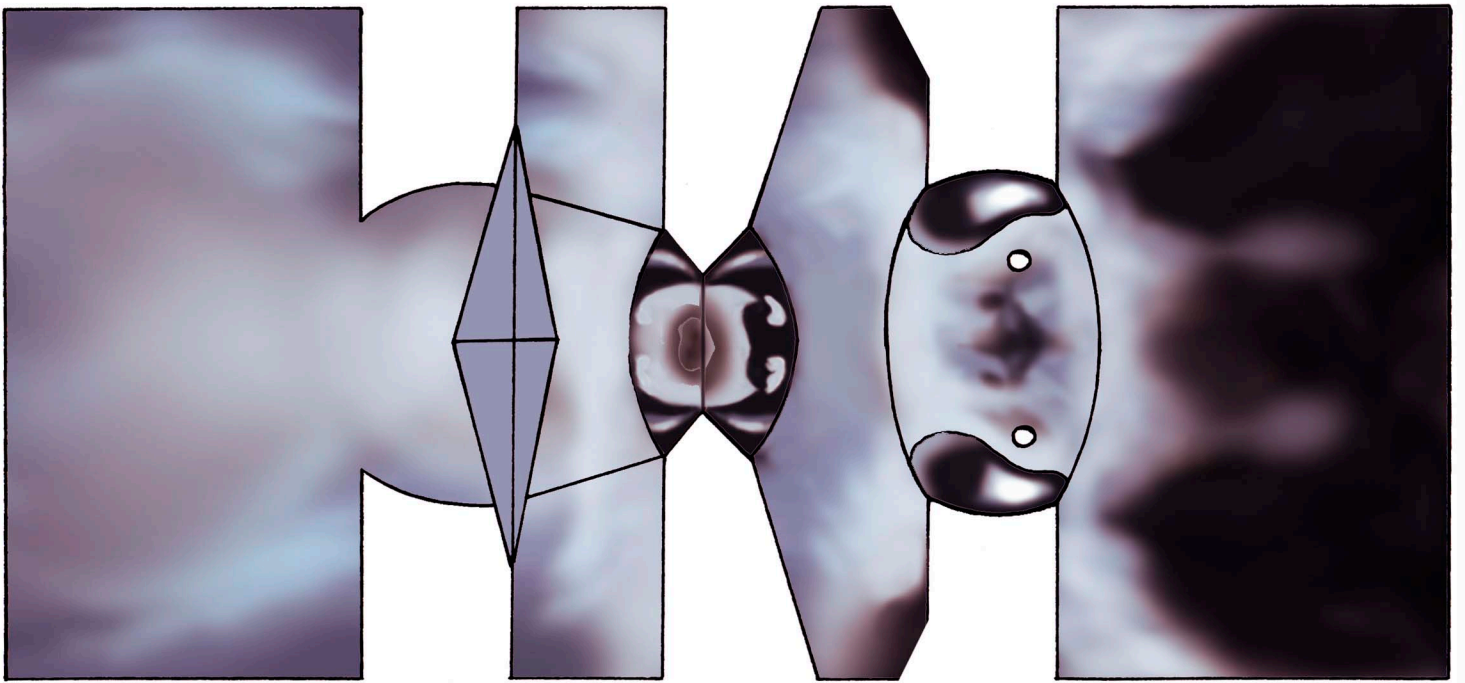
10. Overlap sides of stump, line up bottom edges and glue together working from top down to prevent bulges in paper.



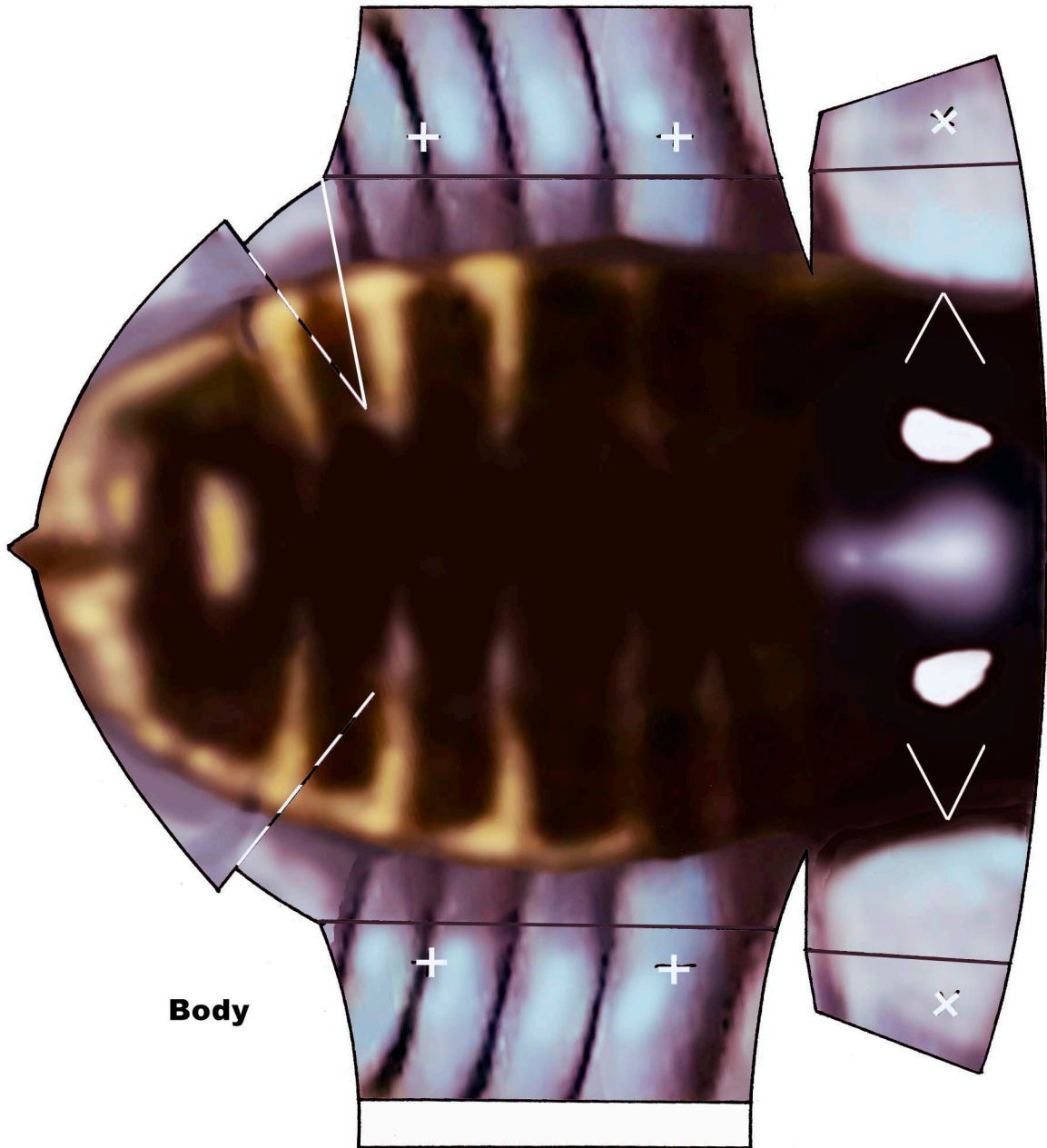
11. Trim excess to tidy up top of stump.



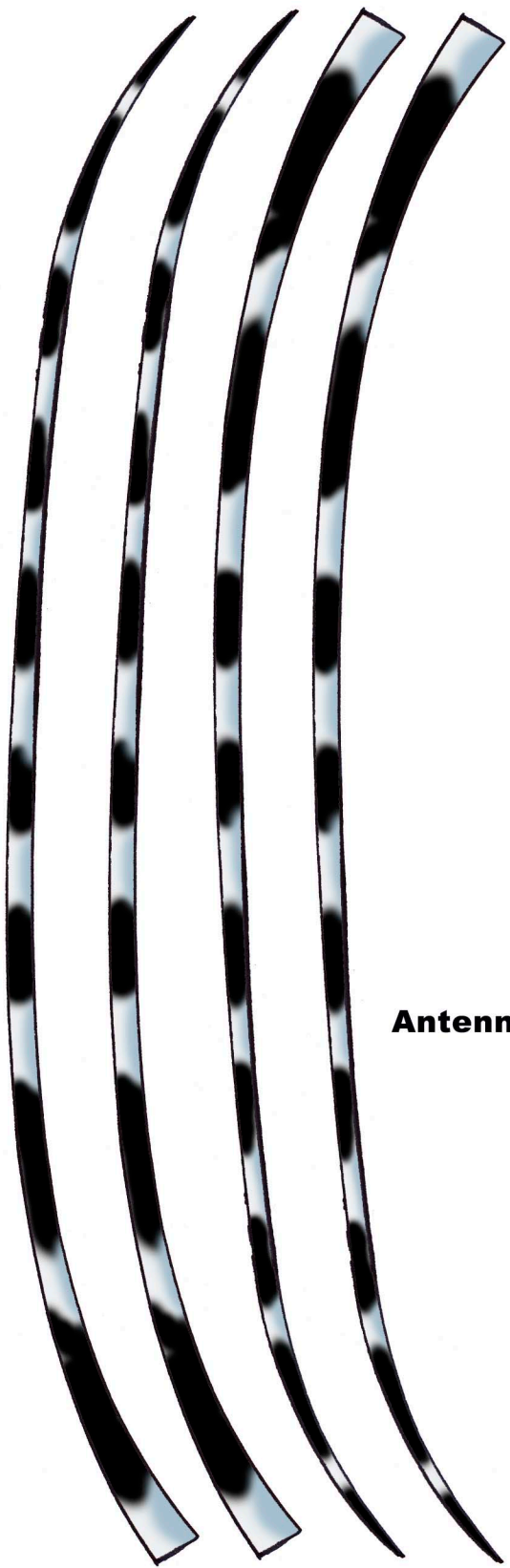
12. Glue bottom tabs in place and glue, staple or tape to your choice of base. A piece of heavy cardboard works well.



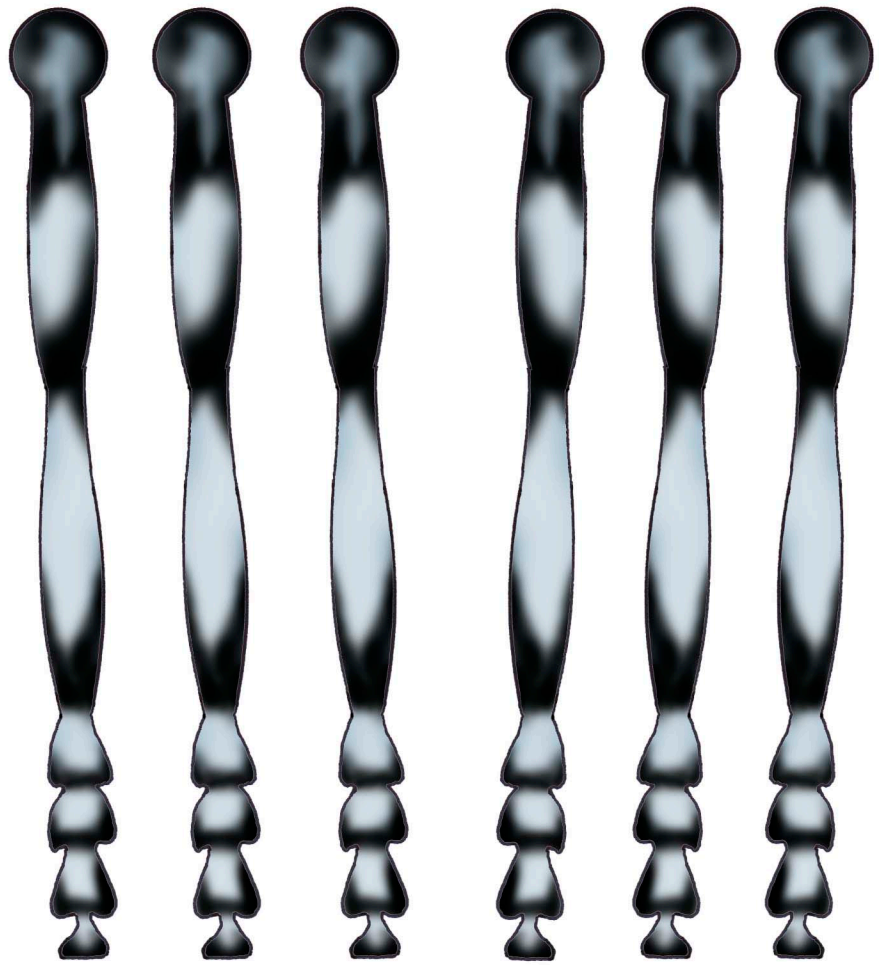
Head



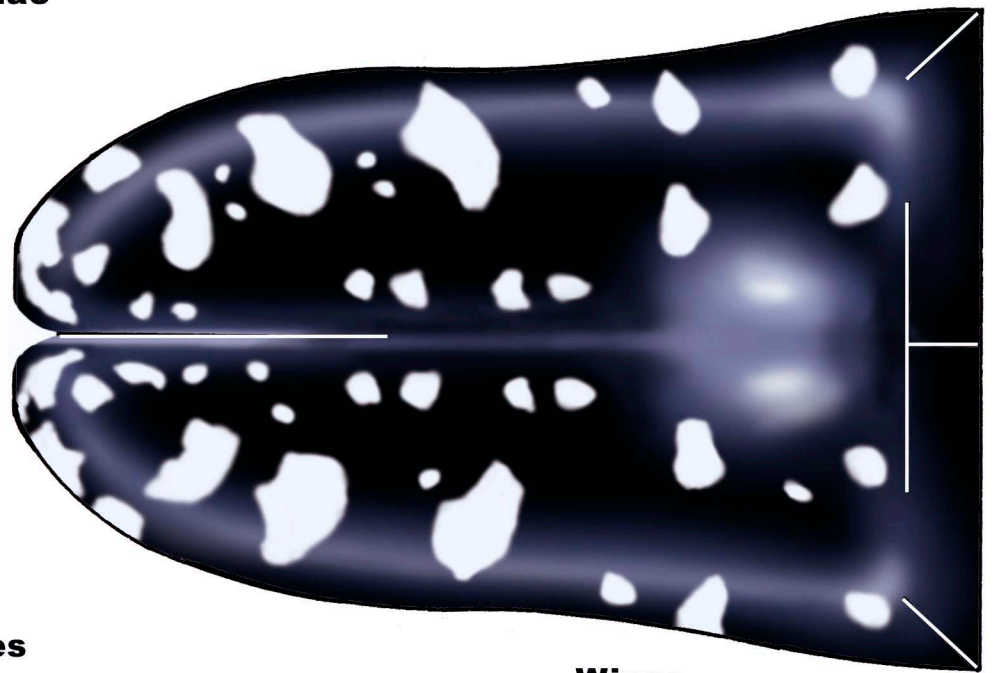
Body



Antennae



Legs



Wings



Antennae Bases

**Stump
Front**

Be on the look-out for signs and symptoms!

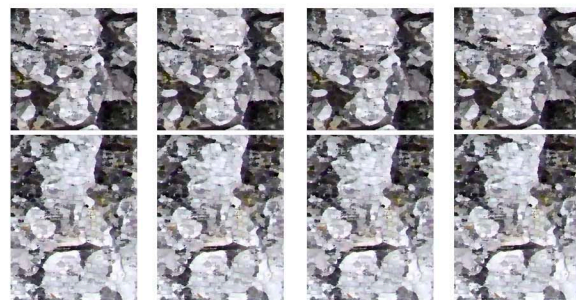
- Round holes 6-12 mm wide on bark (bored by adult insects as they exit the tree)
- Oval-ish 10-mm wide shallow brown scrapes (egg-laying sites)

Stay informed and spread the word!
For more information, visit

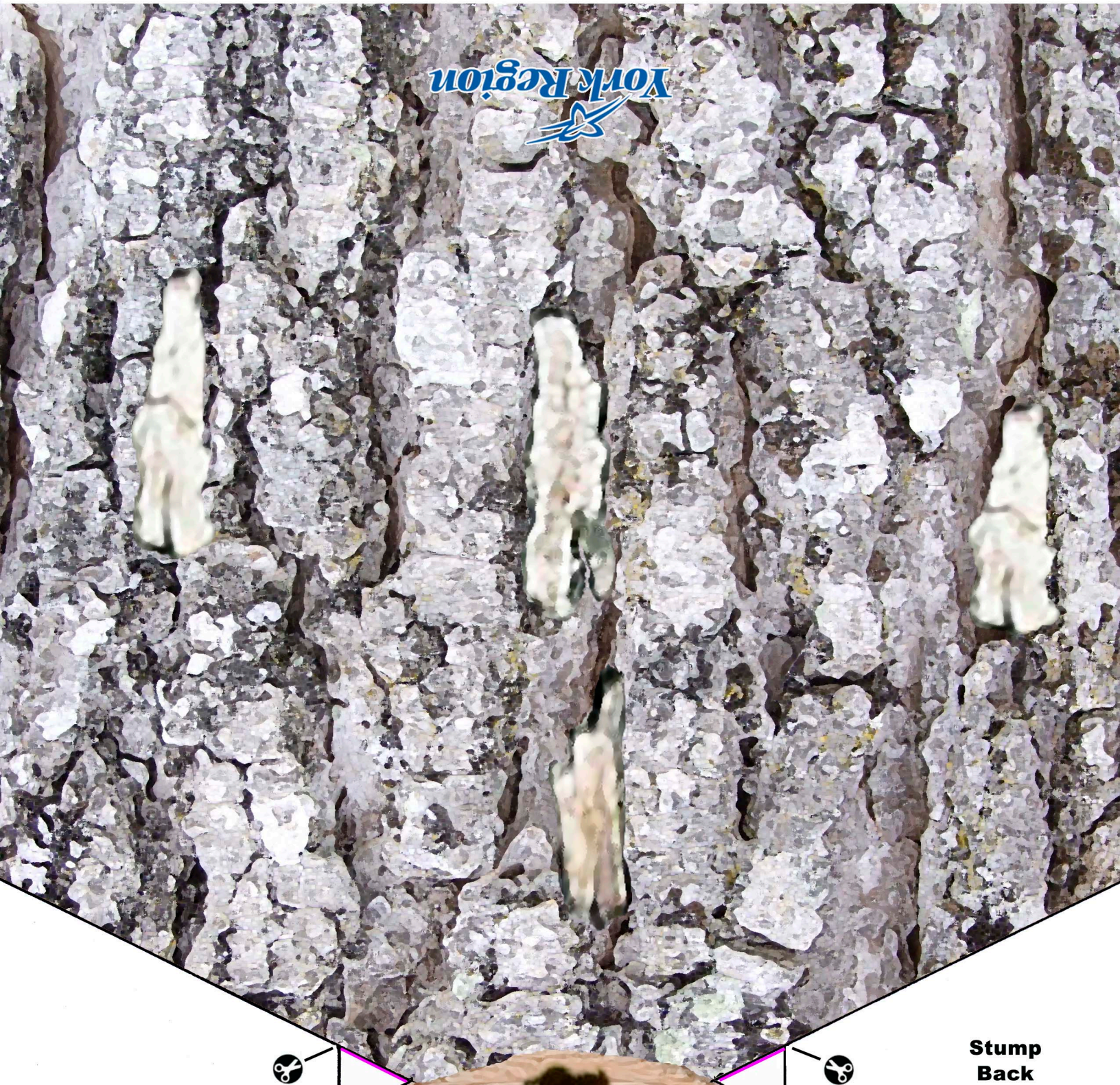
www.york.ca/ALHB



Inner Wood Piece



Tabs

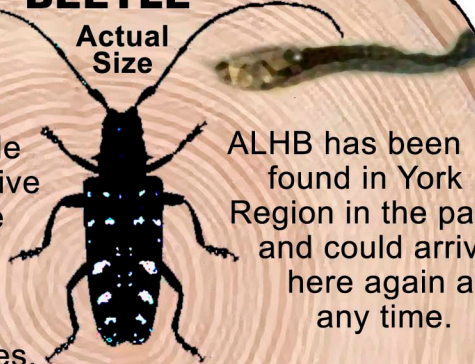


Stump
Back

ASIAN LONGHORNED BEETLE

Actual
Size

The Asian Longhorned Beetle (ALHB) is an invasive insect whose larvae eat the live wood of many species of deciduous trees, including maple trees.



ALHB has been found in York Region in the past and could arrive here again at any time.