

# Update on EAB – The Tiny Green Menace in the Great White North – P1

## Historical update, current situation and next steps

Arvind Vasudevan - Senior Specialist

May 22, 2024



# Presentation outline

- Historical update
- Current situation and regulatory status
- Potential future regulatory scenarios for Canada
- Conclusion & next steps



# Historical update















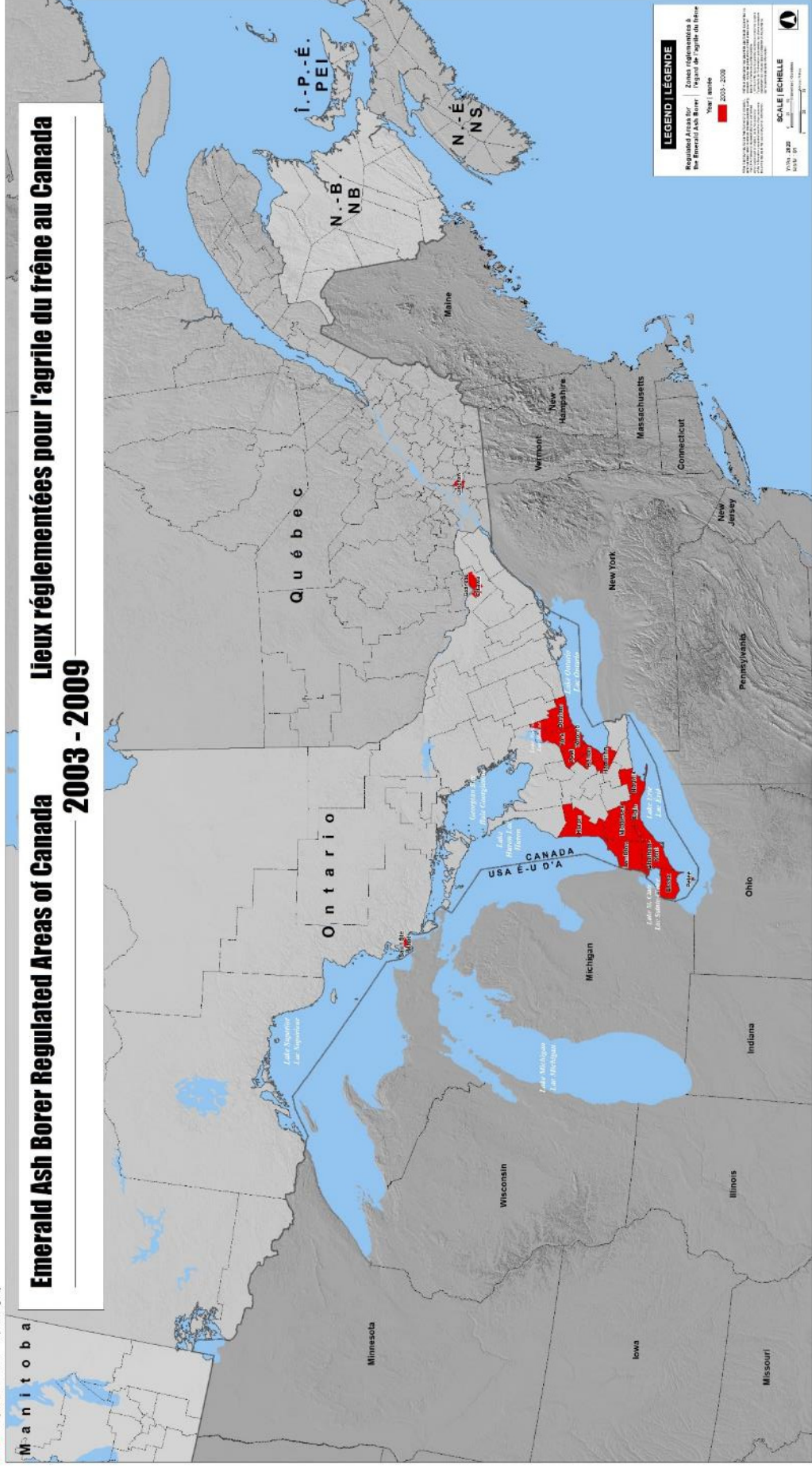
# Historical update

M a n i t o b a

## Emerald Ash Borer Regulated Areas of Canada

## Lieux réglementés pour l'agrile du frêne au Canada

2003 - 2009



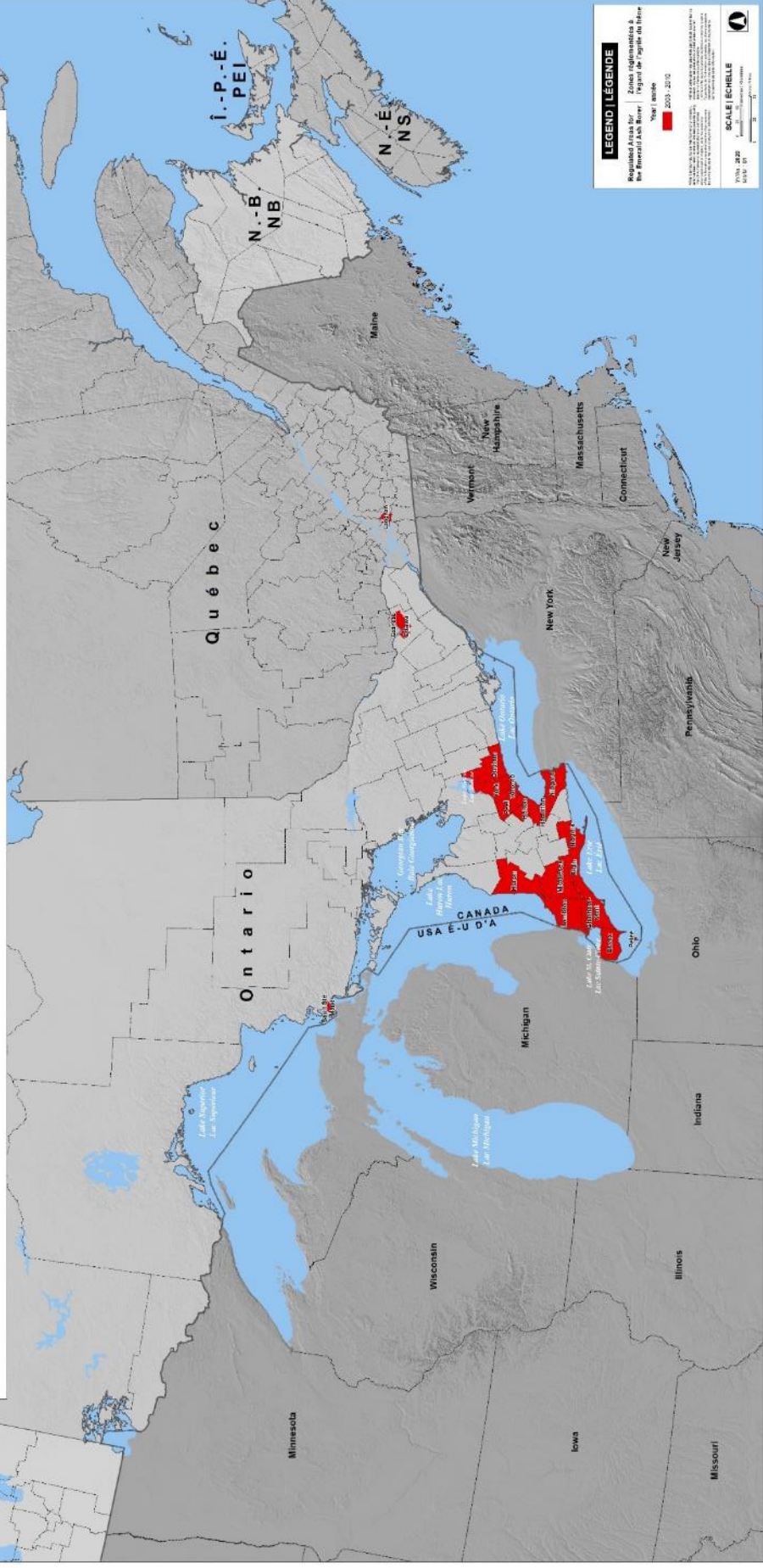
# Historical update

M a n i t o b a

## Emerald Ash Borer Regulated Areas of Canada 2003 - 2010

## Lieux réglementés pour l'agrile du frêne au Canada

2003 - 2010



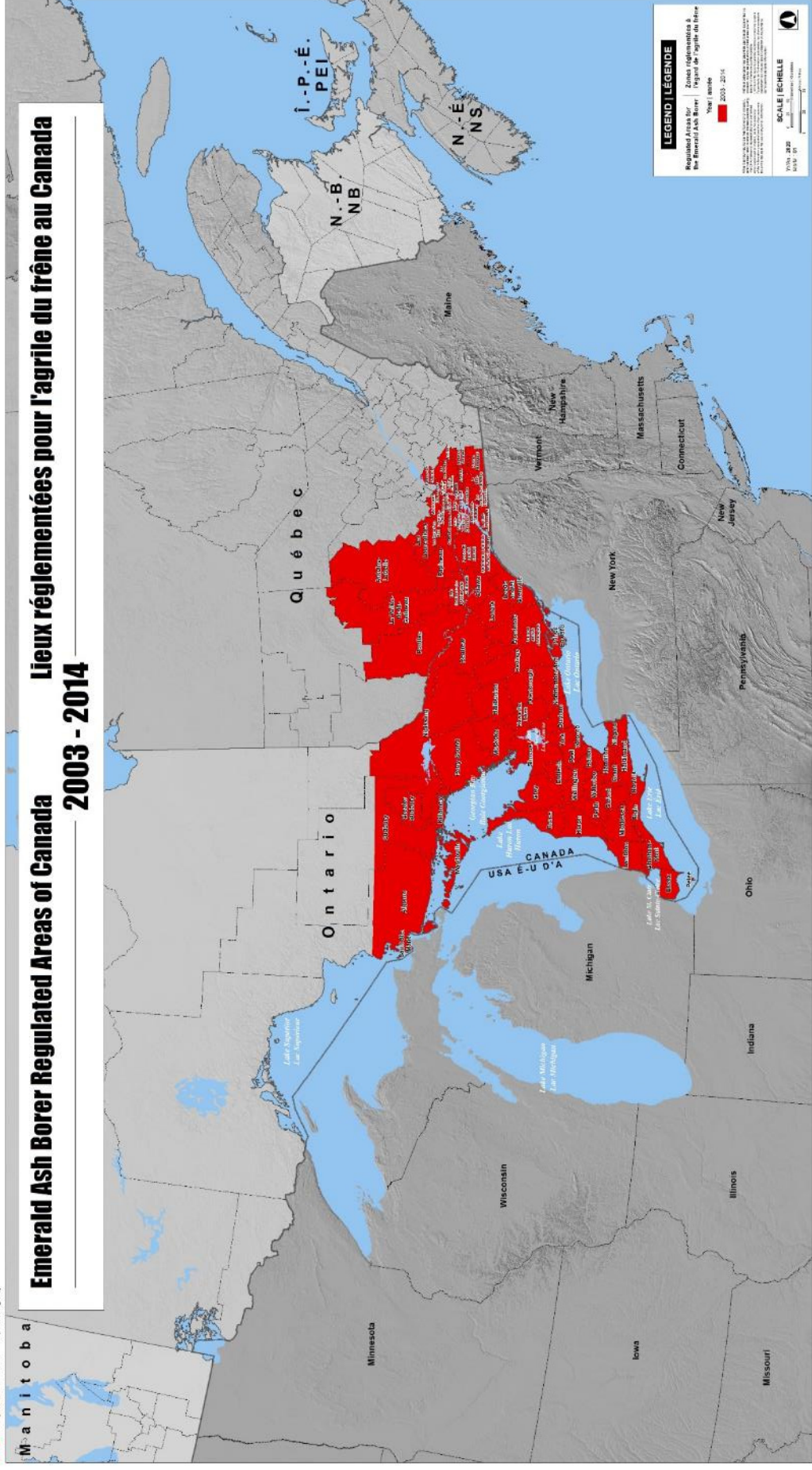




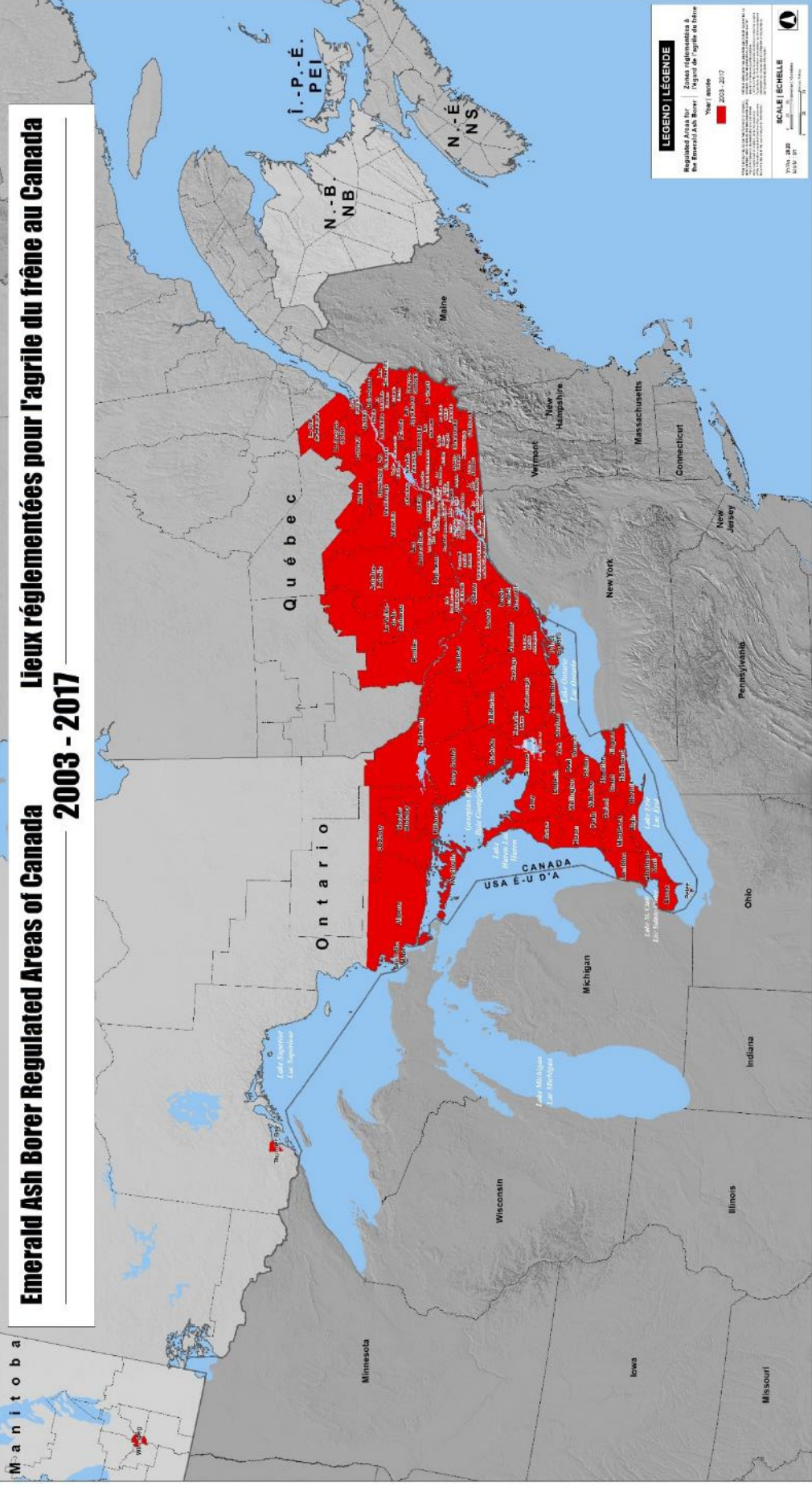


# Historical update

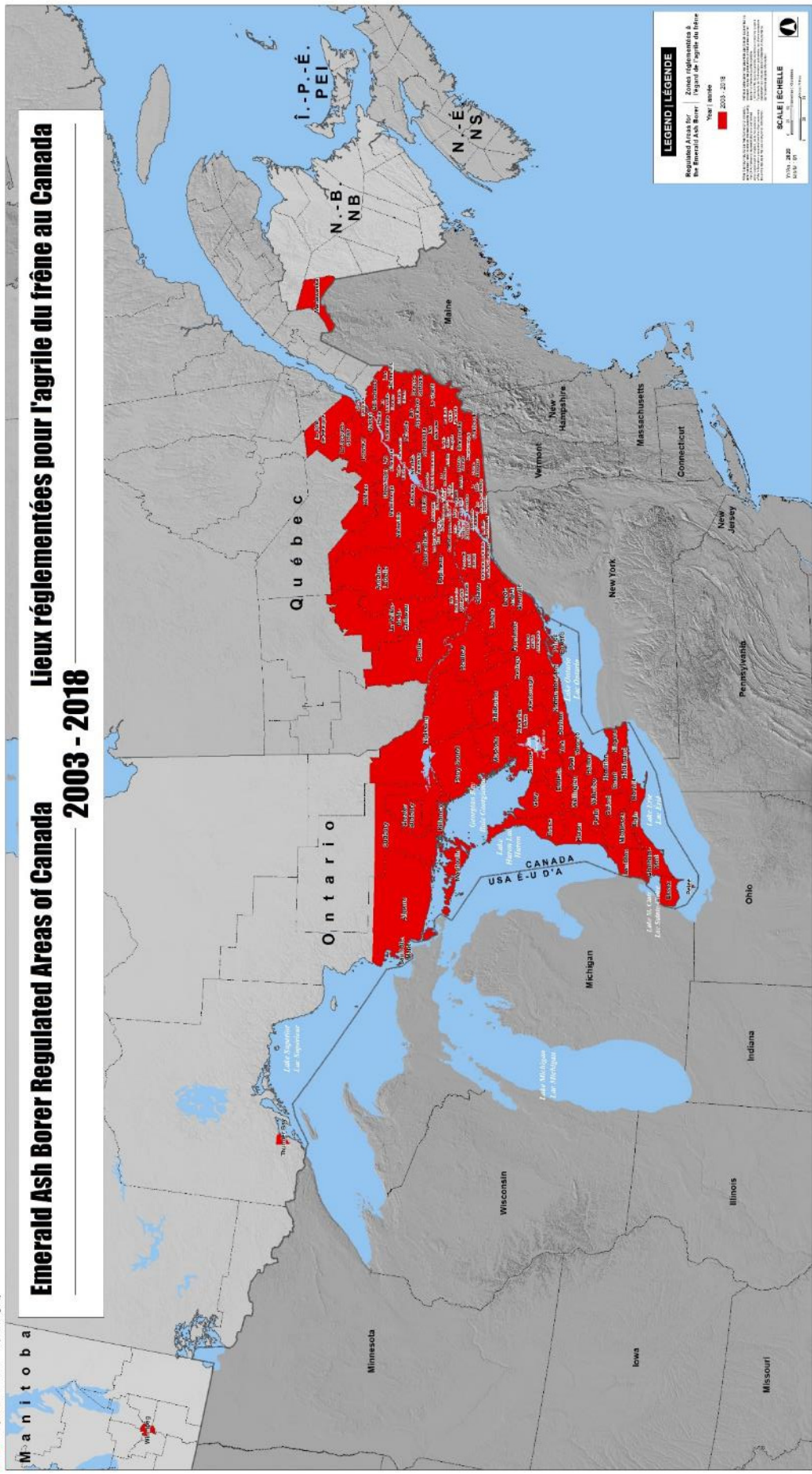
## Emerald Ash Borer Regulated Areas of Canada 2003 - 2014



# Historical update



# Historical update





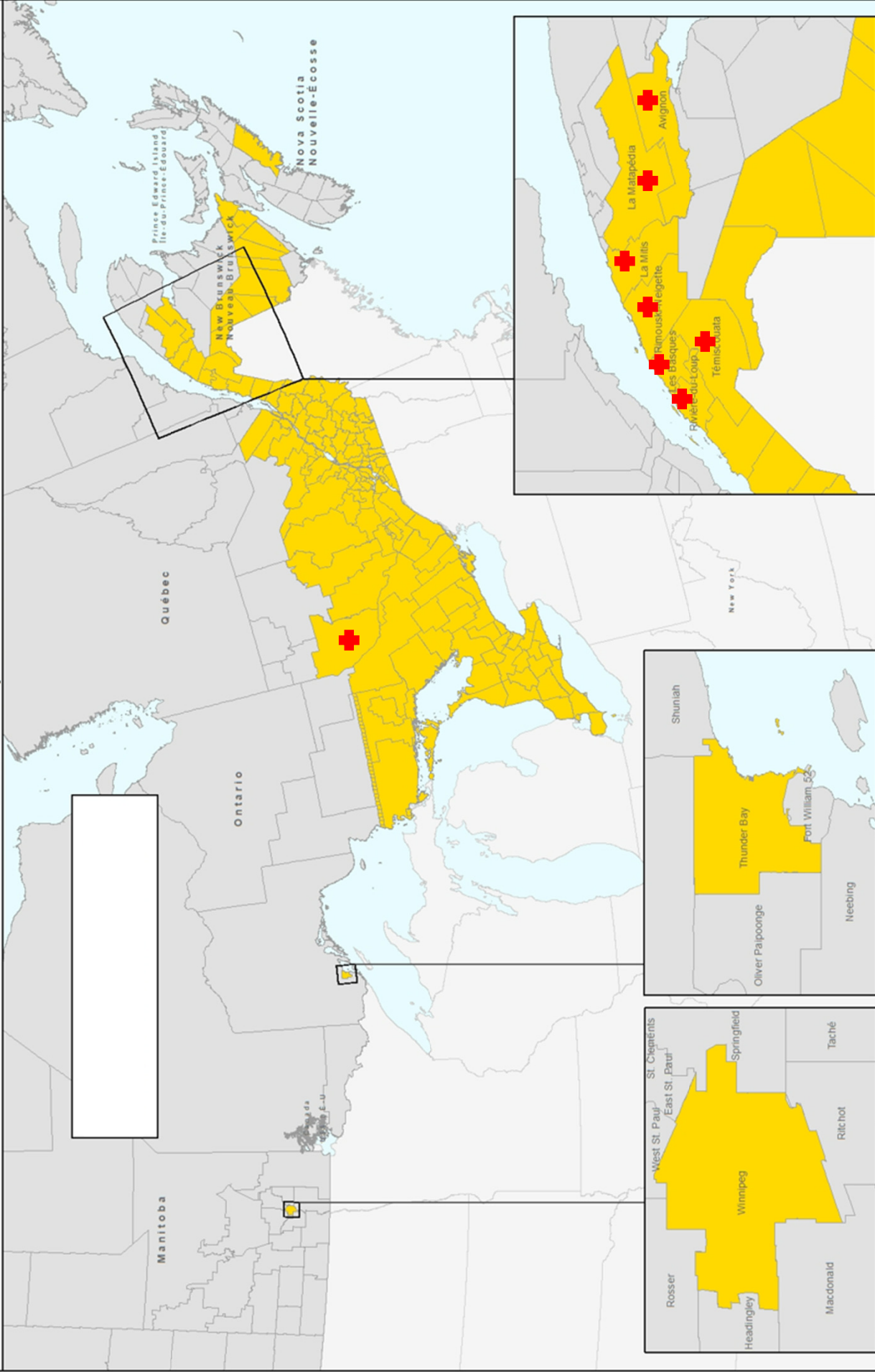






# Emerald Ash Borer | *Agrilus planipennis* | Agrile du frêne

## Infested Places | Lieux infestés



**Infested Places | Lieux infestés**

Prepared by the Canadian Food Inspection Agency.  
 Préparé par l'Agence canadienne d'inspection des aliments.

Data Sources | Sources des données:  
 © Gouvernement du Canada, © Statistics Canada,  
 © ERI and © DMTI Spatial Inc.



# Survey situation

2023-2024 Emerald Ash Borer Survey Dashboard by PHSU and GIS Services

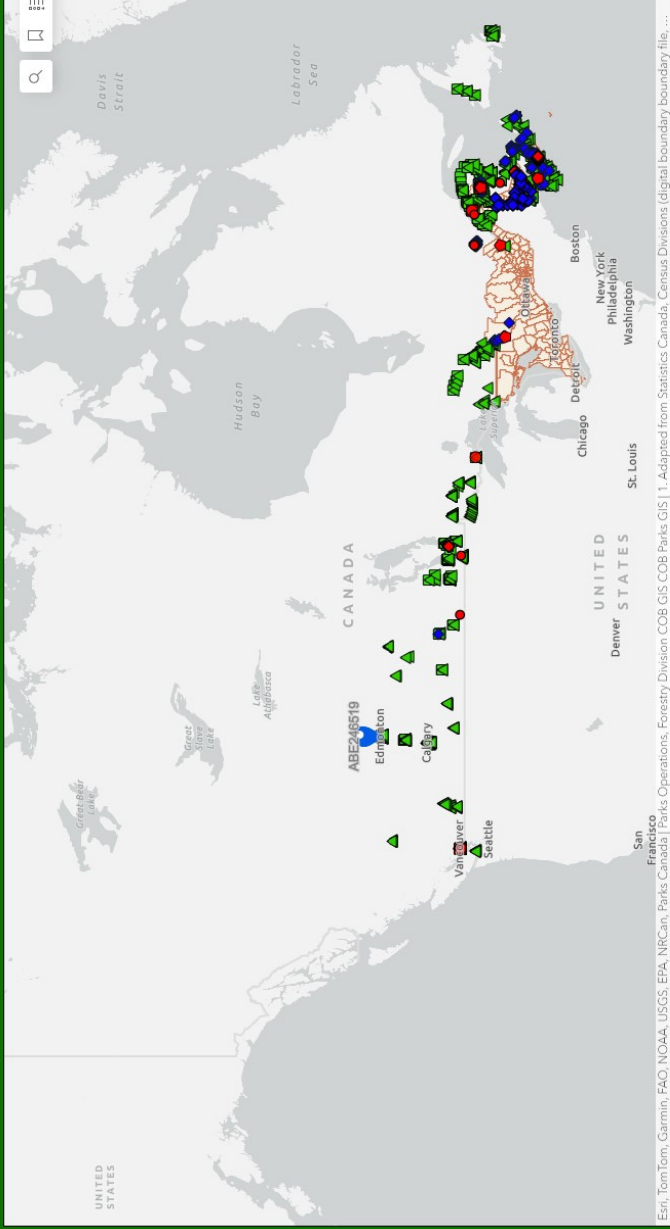
Sites Planned

450

Sites Established

529

% Sites Setup



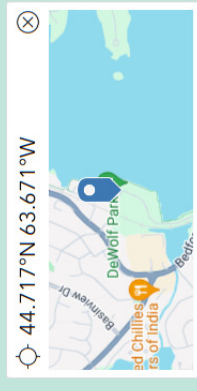
Activities per Day



Privacy Notice Statement

## Site Information

**GPS Survey Location \***  
GPS locations can only be collected while outside



### Geocoding

99 Waterfront Dr, Halifax, NS, B4A 4K5, CAN

### Survey Site Address \*

99 Waterfront Dr

### Survey Site Municipality

Halifax

### Survey Province

Nova Scotia

# EAB Site Characterization Survey

- Inform regulatory decisions
- Identify potential dispersal pathways
- Outreach, training and knowledge transfer with key partners
- Ground-based, visual inspection of ash trees within a 500 m - 5 km radius of the infested trees.



# Current EAB regulatory status

1. Entry requirements for imported ash products



2. Restrictions on domestic movement





# Lessons learned



Natural Resources Canada  
Ressources naturelles Canada



**Emerald Ash Borer, *Agrilus planipennis*:  
An Economic Analysis of Regulations in Canada**  
Emily Hope, Liji Sun, Daniel McKenney, Bryan Bogdanski, John Pedlar, Lachlan Macaulay, Heather MacDonald, Kevin Lawrence



Canadian Forest Service  
Pacific Forestry Centre  
Information Report  
BC-X-454

Canada



# Potential regulatory scenarios

- Eastern Canada Vs Western Canada
- Spongy moth approach



# Potential regulatory scenarios

- Status quo (regulate by county when EAB found)



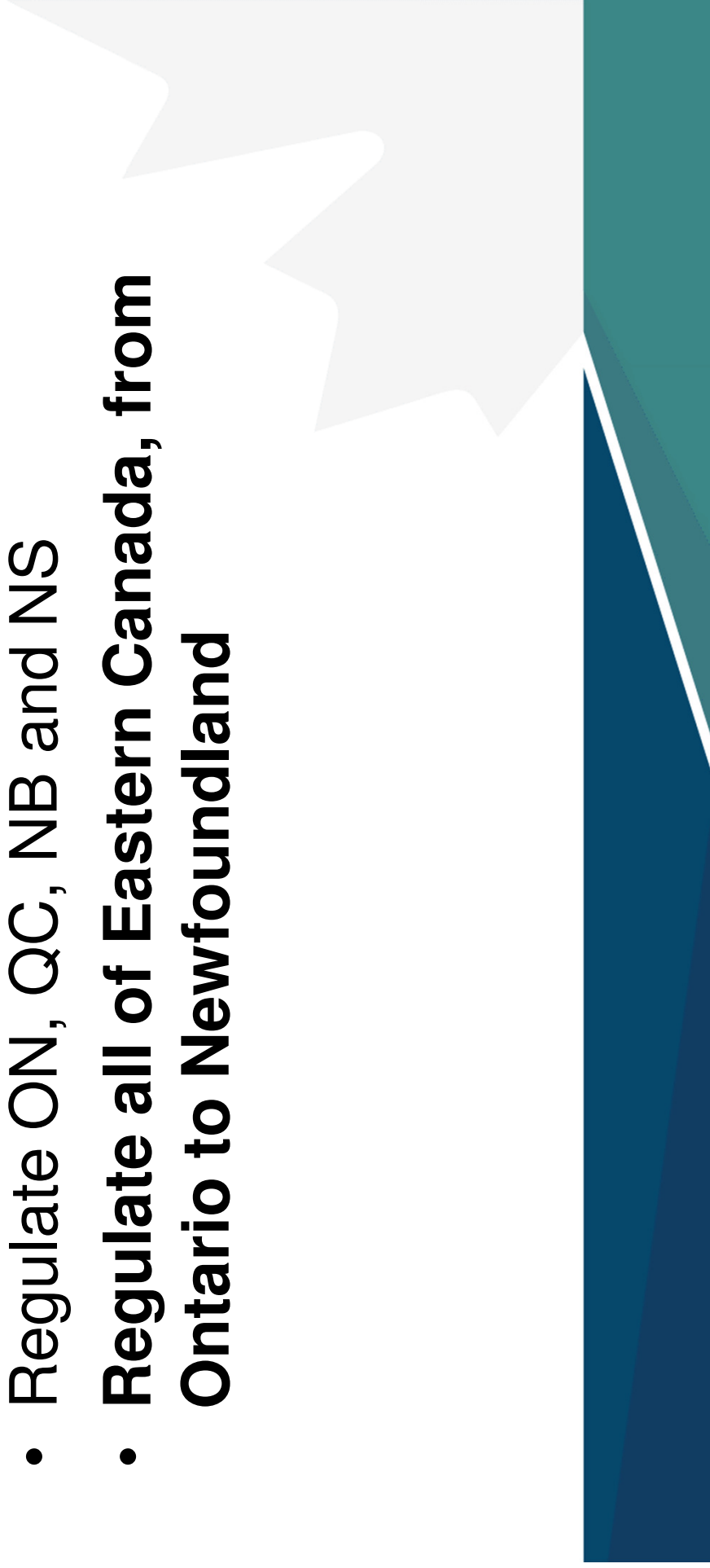
# Potential regulatory scenarios

- Status quo (regulate by county when EAB found)
- **Regulate ON, QC, NB and NS**



# Potential regulatory scenarios

- Status quo (regulate by county when EAB found)
- Regulate ON, QC, NB and NS
- **Regulate all of Eastern Canada, from Ontario to Newfoundland**



# Potential regulatory scenarios

- Status quo (regulate by county when EAB found)
- Regulate ON, QC, NB and NS
- Regulate all of Eastern Canada, from Ontario to Newfoundland
- **Stop restricting domestic, but continue to restrict imports**

# Potential regulatory scenarios

- Status quo (regulate by county when EAB found)
- Regulate ON, QC, NB and NS
- Regulate all of Eastern Canada, from Ontario to Newfoundland
- Stop restricting domestic, but continue to restrict imports
- **EAB deregulated in Canada**

# Conclusion and next steps

